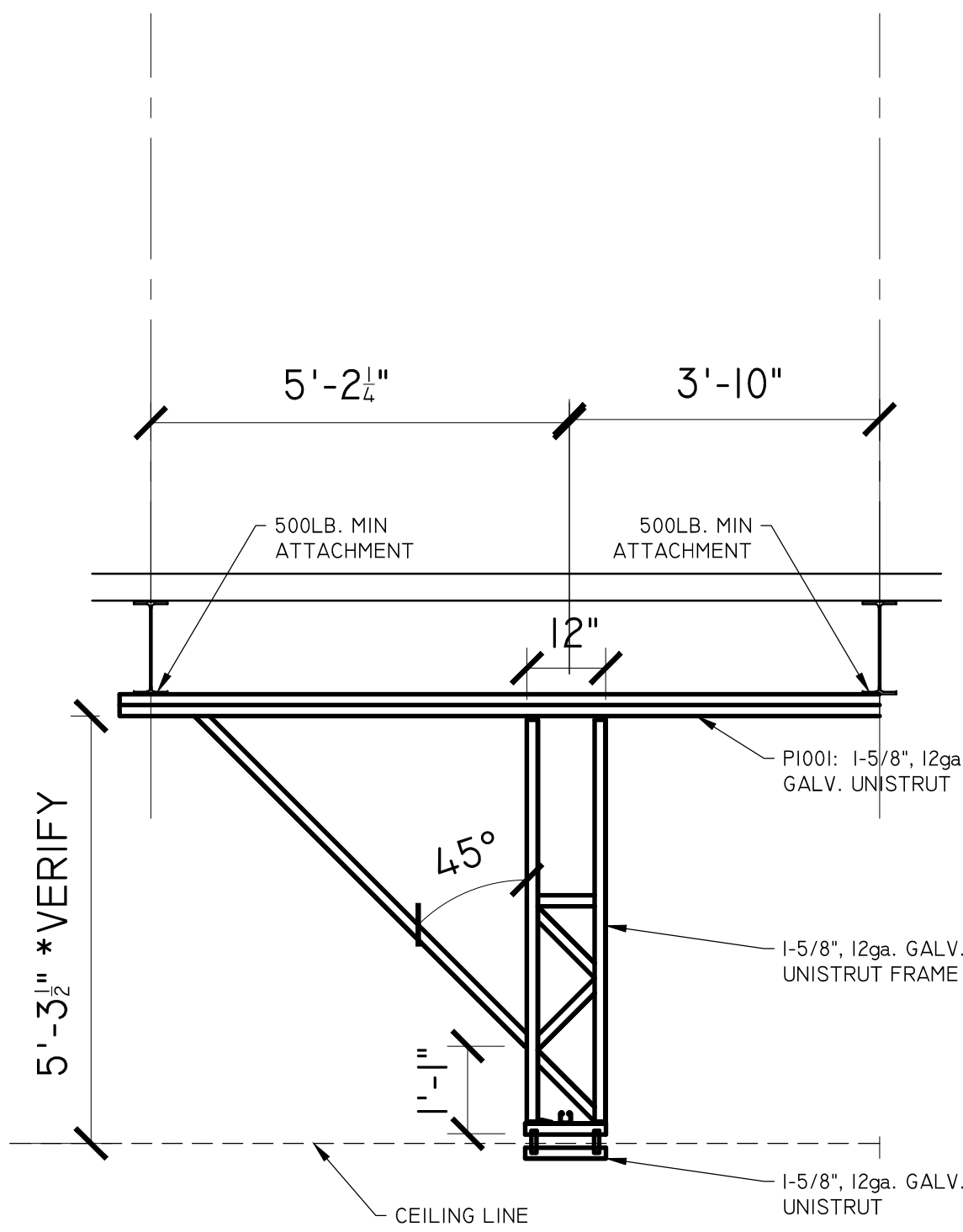
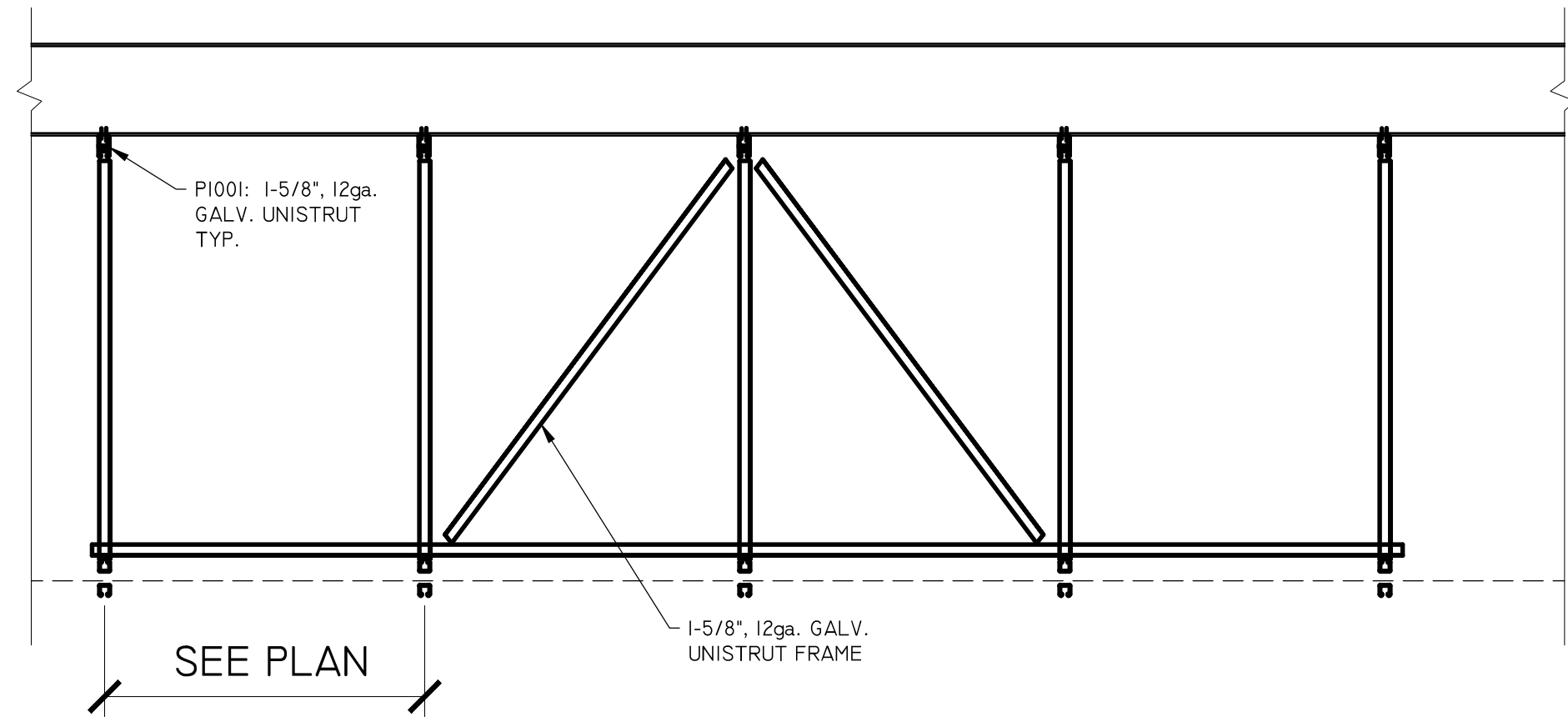


1 ELECTRICAL PLAN - POWER & DATA  
SCALE: 1/8" = 1'-0"



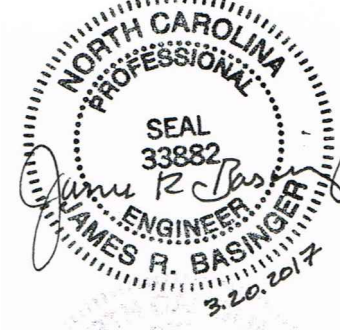
2 UNISTRUT FRAME DETAIL  
SCALE: 3/8" = 1'-0"



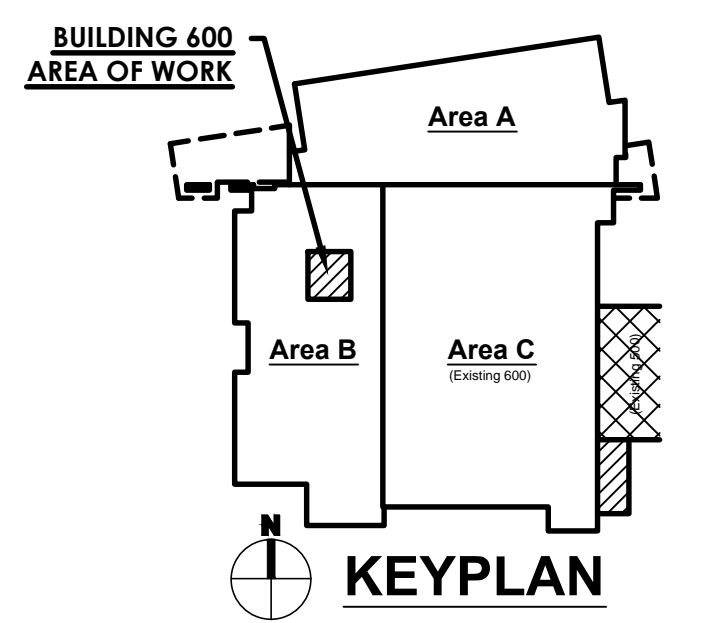
### GENERAL STEEL NOTES

- DESIGN, FABRICATION, AND ERECTION SHALL BE IN ACCORDANCE WITH AISC MANUAL OF STEEL CONSTRUCTION LRFD 2ND EDITION OR ASD 9TH EDITION UNLESS OTHERWISE MODIFIED ON THE DESIGN DRAWINGS OR IN THE SPECIFICATIONS.
- MATERIAL SHALL CONFORM TO THE FOLLOWING SPECIFICATIONS UNLESS OTHERWISE NOTED.  
STRUCTURAL STEEL SHALL BE A-46 KSI STEEL  
HOLLOW STRUCTURAL SECTIONS SHALL BE A500 GRADE B OR C  
WELDING ELECTRODES SHALL BE AWS D1.1 E70XX  
BOLTS SHALL BE ASTM A325 HIGH STRENGTH BOLTS 3/4" DIAMETER UNLESS OTHERWISE NOTED
- ALL SHOP CONNECTIONS SHALL BE WELDED OR MADE WITH HIGH STRENGTH BOLTS.
- ALL WELDING SHALL BE DONE BY CERTIFIED WELDERS IN ACCORDANCE WITH AWS D1.1.
- GUSSET PLATES SHALL BE 3/8" THICK MINIMUM UNLESS OTHERWISE NOTED. ALL CORNERS SHALL BE NEATLY CLIPPED IF THEY PROTRUDE.
- ALL VERTICAL BRACING AND KNEE BRACING SHALL BE ON COLUMN CENTERLINES UNLESS OTHERWISE NOTED.
- SHOP DRAWINGS ARE REQUIRED AND SHALL BE REVIEWED BY THE DESIGN ENGINEER. THIS REVIEW IS FOR DESIGN CONTENT ONLY AND DOES NOT REMOVE RESPONSIBILITY FOR THE FABRICATOR OR THE ERECTOR TO PROVIDE MATERIAL IN ACCORDANCE WITH THESE PLANS.
- THE ERECTOR SHALL PROVIDE ALL TEMPORARY SUPPORTS AND BRACING AS REQUIRED FOR STABILITY OF THE STRUCTURE UNTIL THE STRUCTURE IS COMPLETE.
- ALL STEEL SHALL BE CLEANED IN ACCORDANCE WITH SSPC-SP2 AND SHALL BE SHOP PRIME PAINTED MEETING OR EXCEEDING THE REQUIREMENTS OF FEDERAL SPECIFICATION TT-P-6360, TT-P-664C AND SSPC PAINT-25.
- ALL MISCELLANEOUS STEEL TO BE FABRICATED OFF SITE FOR FRAMEWORK IN-ORDER TO COMPLETE THE PROJECT.
- ALL BEAM CONNECTIONS SHALL SUPPORT ONE-HALF THE TOTAL UNIFORM LOAD CAPACITY SHOWN IN AISC TABLES FOR ALLOWABLE LOADS ON BEAMS FOR THE GIVEN SHAPE, SPAN, AND STEEL SPECIFIED. UNLESS LOADS INDICATE OTHERWISE.
- ALL CONNECTIONS SHALL HAVE A MINIMUM OF TWO BOLTS UNLESS NOTED OTHERWISE

PUBLICATION OR REUSE OF THESE DRAWINGS OR ANY INCLUDED DETAILS MUST BE WITH THE WRITTEN CONSENT OF THE FIRM'S PRINCIPAL ARCHITECT.



## STRUCTURAL PLAN



## RCCC OTA HOME SIMULATION LAB

1333 JAKE ALEXANDER BLVD S  
SALISBURY, NC